

30 KHz to 4 GHz Bias Tee

40 dB Isolation, 2.92 mm Jacks

Features

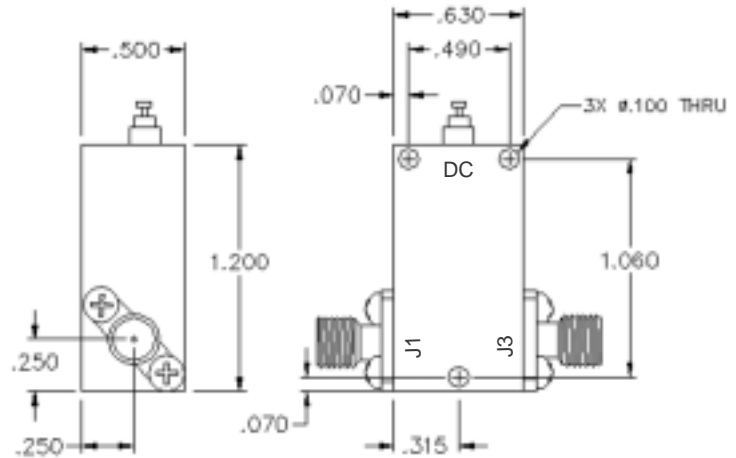
- 30 KHz - 40 GHz Operation
- 2.92 mm RF connectors
- 500 ma at 25 V Rating
- 40 dB isolation
- Compact Size

The MDC9045-16 is an ultra-broadband device that can replace numerous narrower band units in test environments, and eliminate the need to constantly modify laboratory setups. A single component is more cost-effective than many separate ones. The 2.92 mm connectors used on the MDC9045-16 mate electrically and mechanically with both the SMA and 3.5 mm series.

Full Band Performance Summary

Parameter	Specification
Frequency Range	.03 - 40 GHz
Insertion Loss	3 dB maximum
Isolation	40 dB minimum
DC	500 ma @ 25V
VSWR	1.80:1 maximum
Connectors	RF: 2.92 mm jack DC: Terminal*

*: SMA connector available



Port Designations: J1 = RF IN, J3 = RF/DC OUT.

8 - 12.4 GHz Analog Attenuator

8 - 12.4 GHz, SMA Jacks

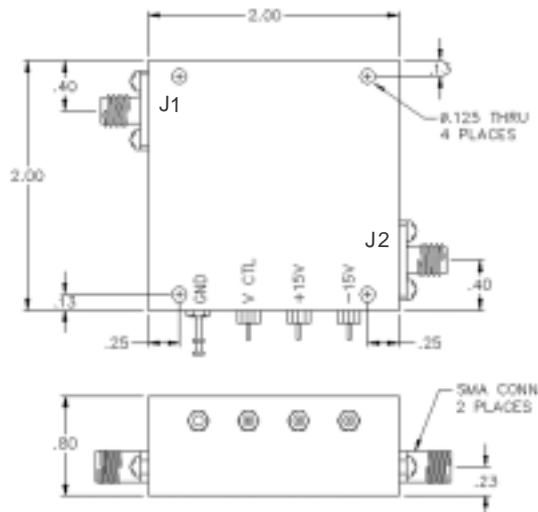
Features

- 8 - 12.4 GHz Operation
- Low Insertion Loss
- 60 dB Range
- +/- 15V Operation
- Many more analog and digital models. Call factory.

Midisco is now offering its model MDC05180 analog controlled variable attenuator. It operates over an 8 - 12.4 GHz frequency range with a nominal 10 dB/volt tuning control. It uses standard supply voltages of +/- 15 VDC.

Performance Summary

Parameter	Specification
Frequency	8 - 12.4 GHz
Insertion Loss	3 dB maximum
Range	60 dB minimum
Control Voltage	10 dB/volt nominal
VSWR	2.0:1 maximum
DC Voltages	+/- 15 V @ 5 ma.



MIDISCO

www.midisco.net • email: sales@midisco.net
1-866-MIDISCO • In New York: 631-589-8035 • FAX: 631-589-8167