

# Isolators / Circulators

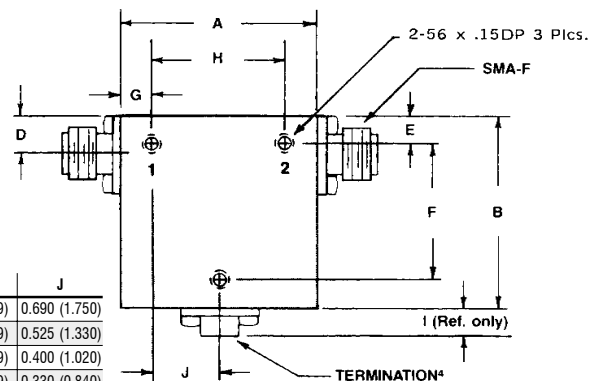
Single Junction - Octave/Broadband - High Performance Narrow Band

## Features

- Small size
- SMA female connectors standard
- Optional removable connectors for assembly integration
- Nickel plated
- SMA male connectors and other types available<sup>5</sup>
- Dual Junction devices available
- Delivery from stock

## MIDISCO standard isolators and circulators are available in selected frequency

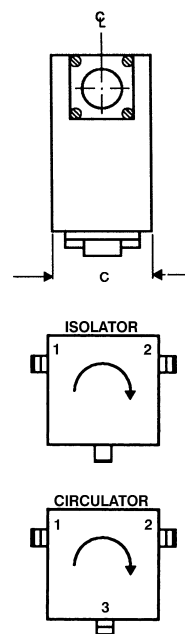
ranges from 0.50 to 40.0 GHz. Standard are SMA female connectors but other types are available. Each model is nickel plate finish with chem film per MIL-C-5541B class 3. Test data may be ordered. Dual Junction devices are available. Standard units are in stock.



Note: Mtg holes for Outline 9 are 0-80 x .080 DP 2 PI.

Outline No.	A	B	C	D	E	F	G	H	I	J
1	1.58 (4.01)	1.62 (4.11)	0.70 (1.78)	0.25 (0.63)	0.25 (0.63)	1.265 (3.213)	0.10 (0.25)	1.380 (3.505)	0.15 (0.29)	0.690 (1.750)
2	1.25 (3.17)	1.25 (3.17)	0.70 (1.78)	0.25 (0.63)	0.25 (0.63)	0.900 (2.286)	0.10 (0.25)	1.050 (2.667)	0.15 (0.29)	0.525 (1.330)
3	1.00 (2.54)	1.00 (2.54)	0.50 (1.27)	0.26 (0.66)	0.25 (0.63)	0.675 (1.715)	0.10 (0.25)	0.800 (2.032)	0.15 (0.29)	0.400 (1.020)
4	0.86 (2.18)	0.98 (2.49)	0.50 (1.27)	0.25 (0.63)	0.25 (0.63)	0.625 (1.587)	0.10 (0.25)	0.660 (1.676)	0.15 (0.29)	0.330 (0.840)
5	0.50 (1.27)	0.70 (1.78)	0.50 (1.27)	0.25 (0.63)	0.18 (0.46)	0.455 (1.156)	0.08 (0.20)	0.340 (0.864)	0.15 (0.29)	0.170 (0.430)
6	0.62 (1.57)	0.78 (1.98)	0.50 (1.27)	0.25 (0.63)	0.25 (0.63)	0.425 (1.079)	0.10 (0.25)	0.420 (1.067)	0.15 (0.29)	0.210 (0.530)
7	1.58 (4.01)	1.62 (4.11)	0.72 (1.90)	0.26 (0.66)	0.26 (0.66)	1.265 (3.213)	0.10 (0.25)	1.380 (3.505)	0.15 (0.29)	0.690 (0.530)
8	1.25 (3.17)	1.25 (3.17)	0.72 (1.90)	0.26 (0.66)	0.26 (0.66)	0.900 (2.286)	0.10 (0.25)	1.050 (2.667)	0.15 (0.29)	0.525 (1.330)
9	0.50 (1.27)	0.58 (1.47)	0.38 (0.97)	0.19 (0.48)	0.19 (0.48)	—	0.10 (0.25)	0.300 (0.762)	0.15 (0.29)	—

Frequency <sup>1</sup> GHz	Model No. Isolator	Model No. Circulator	Isolation dB		Insertion Loss dB		VSWR		Size In. (cm) Outline No.	Approx. Weight oz. (gm.)	Isolator Power (Watts) <sup>2</sup>		Operating Temperature <sup>3</sup> Range °C
			Typ.	Min	Typ.	Max.	Typ.	Max.			Avg.	Peak	
2.0-4.0	M3I2040	M3C2040	20	18	0.40	0.50	1.25	1.30	1	3.50 (100)	2	20	0 to +50
2.0-6.0	M3I2060	M3C2060	15	14	0.70	0.80	1.45	1.50	1	3.50 (100)	2	20	0 to +50
2.0-8.0	M3I2080	M3C2080	—	11	—	1.40	—	1.85	1	6.90 (195)	2	20	0 to +50
2.6-5.2	M3I2652	M3C2652	20	18	0.40	0.50	1.25	1.30	1	3.50 (100)	2	20	0 to +50
3.0-6.0	M3I3060	M3C3060	21	19	0.35	0.40	1.25	1.30	2	2.00 (60)	2	20	0 to +50
3.5-7.0	M3I3570	M3C3570	20	18	0.35	0.40	1.25	1.30	3	1.20 (35)	2	20	0 to +50
3.7-8.3	M3I3783	M3C3783	18	17	0.50	0.60	1.30	1.35	3	1.20 (35)	2	20	0 to +50
4.0-8.0	M3I4080	M3C4080	22	20	0.35	0.40	1.18	1.25	3	1.20 (35)	2	20	-10 to +60
6.0-12.4	M3I6012	M3C6012	19	17	0.50	0.60	1.30	1.35	6	1.00 (30)	2	20	-10 to +60
6.0-18.0	M3I6018	M3C6018	15	14	0.90	1.00	1.45	1.50	9	0.40 (11)	2	20	0 to +85
7.0-11.0	M3I7011	M3C7011	22	20	0.35	0.40	1.18	1.25	4	1.00 (30)	2	500	-30 to +85
7.0-12.4	M3I7012	M3C7012	21	20	0.35	0.40	1.22	1.25	5	1.00 (30)	5	500	-30 lo +85
7.0-18.0	M3I7018	M3C7018	16	15	0.90	1.00	1.45	1.50	5	0.90 (25)	2	30	-10 to +85
8.0-12.4	M3I8012	M3C8012	22	20	0.35	0.40	1.18	1.25	4	1.00 (30)	2	500	-30 to +85
8.0-16.0	M3I8016	M3C8016	19	17	0.50	0.60	1.30	1.35	5	0.90 (25)	2	30	-20 to +65
8.0-18.0	M3I8018	M3C8018	17	16	0.70	0.80	1.40	1.45	5	0.90 (25)	2	30	-10 to +85
8.0-20.0	M3I8020	M3C8020	—	15	0.70	1.00	—	1.45	5	0.90 (25)	2	30	-10 to +85
10.0-20.0	M3I1020	M3C1020	17	16	0.60	0.70	1.35	1.40	5	0.90 (25)	2	30	-20 to +65
12.0-18.0	M3I1118	M3C1118	22	20	0.45	0.50	1.18	1.25	5	0.90 (25)	2	30	-20 to +65
18.0-26.5	M3I1826	M3C1826	20	18	0.70	0.80	1.35	1.40	5	0.90 (25)	2	30	-20 to +65
26.5-40.0*	M3I2640	M3C2640	15	14	0.80	1.00	1.45	1.50	5	0.90 (25)	2	30	-20 to +65
0.5-0.55	M3I0555	M3C0555	23	20	0.30	0.40	1.15	1.25	7	4.80 (135)	2	750	-20 to +65
0.525-0.6	M3I0560	M3C0560	23	20	0.30	0.40	1.15	1.25	7	4.80 (135)	2	750	-20 to +65
0.6-0.7	M3I0670	M3C0670	23	20	0.30	0.40	1.15	1.25	7	4.50 (129)	2	750	-20 to +65
0.7-0.8	M3I0780	M3C0780	23	20	0.30	0.40	1.15	1.25	7	4.50 (129)	2	750	-20 to +65
0.8-0.9	M3I0890	M3C0890	23	20	0.30	0.40	1.15	1.25	8	2.80 (80)	2	750	-20 to +65
0.95-1.225	M3I9525	M3C9525	22	20	0.35	0.40	1.18	1.25	8	2.80 (80)	2	500	-20 to +65
1.2-1.4	M3I0112	M3C0112	23	20	0.30	0.40	1.15	1.25	8	2.70 (76)	2	500	-20 to +65
1.4-1.6	M3I0116	M3C0116	23	20	0.30	0.40	1.15	1.25	8	2.00 (56)	2	500	-20 lo +65
1.6-1.8	M3I0118	M3C0118	23	20	0.30	0.40	1.15	1.25	3	2.00 (56)	2	350	-20 to +65
1.7-2.0	M3I0120	M3C0120	23	20	0.30	0.40	1.15	1.25	3	2.00 (56)	2	350	-20 to +65
2.0-2.3	M3I0223	M3C0223	23	20	0.30	0.40	1.15	1.25	3	2.00 (56)	2	350	-20 to +65
3.7-4.2	M3I3742	M3C3742	26	23	0.10	0.15	1.10	1.15	3	1.40 (39)	2	20	-30 to +65
4.4-5.0	M3I4450	M3C4450	26	23	0.10	0.15	1.10	1.15	3	1.40 (39)	2	20	-30 to +65
5.4-5.9	M3I5459	M3C5459	26	23	0.10	0.15	1.10	1.15	6	1.00 (29)	2	20	-30 to +65
5.9-6.4	M3I5964	M3C5964	26	23	0.10	0.15	1.10	1.15	6	1.00 (29)	2	20	-30 to +65
7.5-10.0	M3I7510	M3C7510	23	20	0.30	0.50	1.15	1.25	5	0.74 (21)	2	50	-30 to +65
7.7-8.4	M3I7784	M3C7784	26	23	0.15	0.20	1.10	1.20	5	0.74 (21)	2	50	-30 to +65
8.5-9.6	M3I8596	M3C8596	26	23	0.15	0.20	1.10	1.20	5	0.74 (21)	2	50	-30 to +65
9.2-10.5	M3I9211	M3C9211	26	23	0.15	0.20	1.10	1.20	5	0.74 (21)	2	50	-30 to +65
10.7-11.7	M3I1112	M3C1112	26	23	0.15	0.20	1.10	1.20	5	0.74 (21)	2	50	-30 to +65
11.7-12.7	M3I1213	M3C1213	26	23	0.15	0.20	1.10	1.20	5	0.74 (21)	2	50	-30 to +65
17.0-20.0	M3I1720	M3C1720	24	22	0.30	0.40	1.15	1.20	5	0.74 (21)	2	50	0 to +50
19.0-22.0	M3I1922	M3C1922	24	22	0.30	0.40	1.15	1.20	5	0.74 (21)	2	50	0 to +50
20.0-21.5	M3I2021	M3C2021	24	22	0.30	0.40	1.15	1.20	5	0.74 (21)	2	50	0 to +50
20.0-23.0	M3I2023	M3C2023	24	22	0.30	0.40	1.15	1.20	5	0.74 (21)	2	50	0 to +50



1. Other frequencies available on request
2. Consult factory for power handling capability of circulator.
3. Storage temperature range is -55°C to 100°C.
4. Connector and termination locations are interchangeable.
5. SMA Male connectors are available by adding suffix "M1", "M2", or "M3" for corresponding port number(s). Example: M3I8018M1

\* Supplied with "K" female connectors. K connector trademark of Wiltron Co.

See Note 6, Isolator Power footnote on page 70.

www.midisco.net • email: sales@midisco.net

1-866-MIDISCO • In New York: 631-589-8035 • Fax: 631-589-8167

# MIDISCO