

# Power Dividers

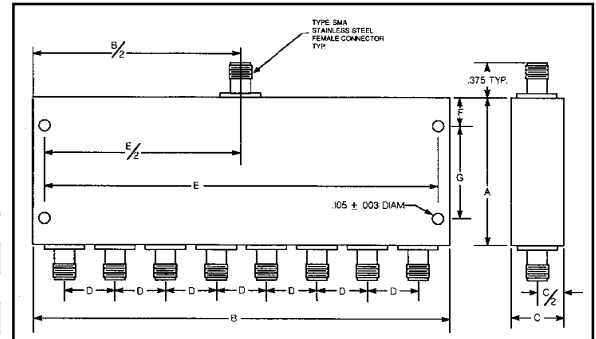
## Isolated In-Phase 8 Way — 0.74-18GHz

### Features

- Low VSWR, insertion loss
- Flat frequency response
- Excellent phase and amplitude tracking
- Wide bandwidth
- Useable as combiner
- RF shielded
- High isolation
- Constructed to exceed MIL-E-5400 & MIL-E-16400
- Delivery from stock

**MIDISCO** miniature stripline power dividers provide high isolation in-phase division of input power between output ports. These low VSWR units are contained within precision machined housings that are designed to provide high RF shielding and eliminate unwanted RF modes.

Standard models have nine SMA Female connectors. Other frequency ranges, 2, 4, or 16 way configurations, and different connector types are available.



Outline	A	B	C	D	E	F	G
1	2.40	4.00	0.38	0.50	3.80	0.30	1.80
2	2.45	5.20	0.38	0.60	4.95	0.48	1.50
3	3.50	5.20	0.38	0.60	5.00	1.80	—
4	3.80	5.50	0.50	0.69	5.10	0.50	2.60

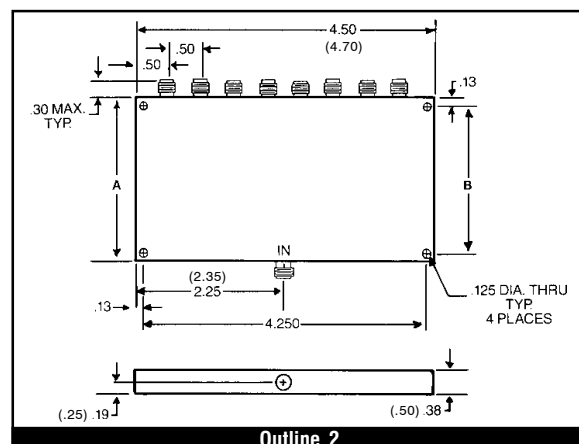
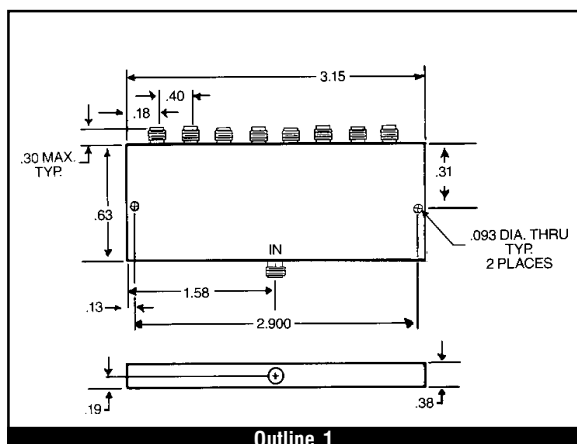
Model Number*	Freq. Range (GHz)	Insertion Loss (dB) max	Amplitude Balance (dB) max	Phase Balance (deg) max	VSWR max		Isolation (dB) min	Input Power (W) Load VSWR			Outline Dwg. No.
					Input	Output		1.2	2.0	∞	
MDC2823A	.74-1.96	0.5	0.2	3.0	1.40	1.20	20	30	10	1	4
MDC2824A	1.3-1.76	0.4	0.2	4.0	1.35	1.20	19	30	10	1	2
MDC2825	2-4	1.0	0.4	5.0	1.60	1.30	18	30	10	1	2
MDC2863A	3.6-4.3	0.8	0.4	5.0	1.35	1.35	20	30	10	1	3
MDC2826	4-8	0.8	0.8	6.0	1.30	1.35	20	30	10	1	2
MDC2826A	5.5-8	0.7	0.3	6.0	1.75	1.25	20	30	10	1	1
MDC2827	7-12.4	0.8	0.6	6.0	1.55	1.45	16	30	10	1	1
MDC2888	12-18	1.5	0.6	6.0	1.60	1.50	15	30	10	1	1
MDC2889	8-18	2.0	0.6	6.0	1.60	1.50	15	30	10	1	1

\* For type N connectors, add suffix "N" to part number.  
For 2-18GHz - Part Number = MDC2890

# Power Dividers

## Broadband & Multi-Octave — 0.2 MHz - 18 GHz

Model Number	Freq. Range (MHz)	Insertion Loss (dB) max	Amplitude Balance (dB) max	Phase Balance (deg) max	VSWR max		Isolation (dB) min	Input Power (W) max	Outline Dwg. #	A	B
					Input	Output					
M8P65	.2-200	1.30	0.20	6.0	1.30	1.30	23	1.5	1	-	-
M8P66	5-500	1.50	0.20	6.0	1.30	1.30	23	1.5	1	-	-
M8P43	500-2000	1.50	0.30	6.0	1.40	1.25	20	30	2	4.50	4.25
M8P46	500-4000	1.80	0.50	2.0	1.50	1.50	20	30	2	4.50	4.25
M8P44	2000-8000	1.25	0.30	6.0	1.40	1.30	20	30	2	4.50	4.25
M8P32	6000-18000	1.50	0.50	5.0	1.70	1.70	15	30	2	2.00	1.75



(XX): Dimensions in brackets apply to M8P32 only.