

Power Dividers

Isolated In-Phase 2 Way — 0.5-26.5 GHz

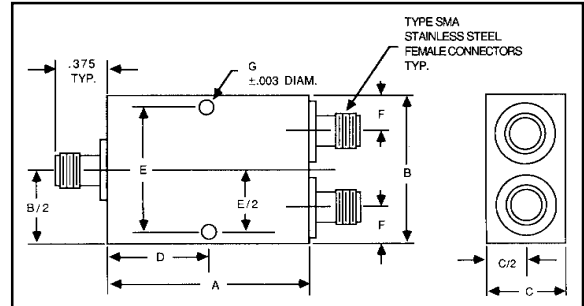
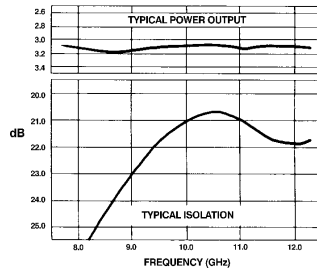
Features

- Use as divider or combiner
- Low insertion loss & VSWR
- Flat frequency response
- Excellent phase and amplitude tracking
- High isolation
- RF shielded
- Constructed to exceed MIL-E-5400 & MIL-E-16400
- Type N connector models available
- Delivery from stock

MIDISCO

miniature stripline power dividers provide high isolation in-phase division of input power between output ports. These low VSWR units are contained within precision machined housings that are designed to provide high RF shielding and eliminate unwanted RF modes.

Standard models have three SMA female connectors. Other frequency ranges, 4, 8 or 16 way configurations, and different connector types are available. Consult factory for 26.5 GHz units.



Model Number	Freq. Range (GHz)	Insertion Loss (dB) max	Amplitude Balance (dB) max	Phase Balance (deg) max	VSWR max		Isolation	Input Power (W) Load VSWR			Outline Dwg. No.
					Input	Output		1.2	2.0	∞	
MDC2223	0.5-1	0.20	0.2	2.0	1.20	1.10	22	30	20	1	4
MDC2224	1-2	0.25	0.2	3.0	1.25	1.20	22	30	20	1	2
MDC2225	2-4	0.30	0.2	4.0	1.30	1.30	20	30	10	1	2
MDC2245A	0.5-4	0.50	0.2	4.0	1.30	1.20	20	30	10	1	6
MDC2263	3-5	0.35	0.2	4.0	1.30	1.30	20	30	10	1	2
MDC2226	4-8	0.35	0.2	4.0	1.30	1.30	20	30	10	1	1
MDC2266	2-8	0.40	0.2	4.0	1.35	1.35	20	30	10	1	3
MDC2227	7-12.4	0.40	0.2	4.0	1.30	1.35	20	30	10	1	1
MDC2288	12-18	0.60	0.2	5.0	1.35	1.40	20	30	10	1	1
MDC2289	8-18	0.60	0.2	5.0	1.35	1.40	20	30	10	1	1
MDC2290	6-18	1.00	0.2	5.0	1.50	1.50	18	30	10	1	5
MDC2269	2-18	1.00	0.3	5.0	1.50	1.50	17	30	10	1	5

Outline	A	B	C	D	E	F	G
1	1.00	1.00	0.50	0.50	0.64	0.25	.104
2	1.50	1.50	0.50	0.75	1.31	0.25	.104
3	2.00	1.50	0.50	1.00	1.31	0.25	.104
4	1.50	2.50	0.50	0.53	2.31	0.75	.104
5	1.62	1.00	0.38	0.75	0.85	0.25	.104
6	3.00	1.50	0.50	1.50	0.66	0.25	.125

Power Dividers

Isolated In-Phase 4 Way — 0.5-26.5 GHz

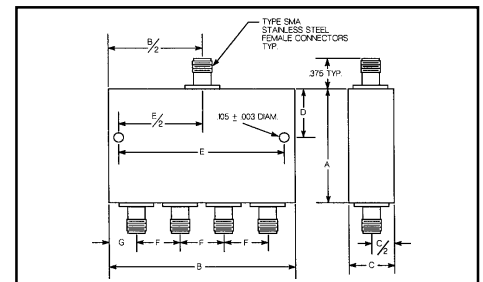
Features

- Low VSWR, insertion loss
- Flat frequency response
- Excellent phase and amplitude tracking
- Wide bandwidth
- Useable as combiner
- RF shielded
- Constructed to exceed MIL-E-5400 & MIL-E-16400
- Type N connector models available

MIDISCO

miniature stripline power dividers provide high isolation in-phase division of input power between output ports. These low VSWR units are contained within precision machined housings that are designed to provide high RF shielding and eliminate unwanted RF modes.

Standard models have five SMA Female connectors. Other frequency ranges, configurations, and connector types are available. Consult factory for 26.5 GHz units.



Model Number	Freq. Range (GHz)	Insertion Loss (dB) max	Amplitude Balance (dB) max	Phase Balance (deg) max	VSWR max		Isolation (dB) min	Input Power (W) Load VSWR			Outline Dwg. #
					Input	Output		1.2	2.0	∞	
MDC2423	0.5-1	0.40	0.4	4.0	1.30	1.20	20	30	20	3	7
MDC2424	1-2	0.60	0.3	5.0	1.60	1.35	20	30	20	3	5
MDC2425	2-4	0.60	0.6	6.0	1.50	1.50	18	30	10	1	4
MDC2463	3-5	0.50	0.3	4.0	1.35	1.30	20	30	10	1	2
MDC2426	4-8	0.40	0.3	4.0	1.40	1.25	20	30	10	1	3
MDC2466	2-8	0.80	0.4	7.0	1.50	1.40	16	30	10	1	8
MDC2427	7-12.4	0.80	0.6	6.0	1.50	1.50	16	30	10	1	1
MDC2488	12-18	1.50	0.6	6.0	1.50	1.50	18	30	10	1	3
MDC2489	8-18	1.50	0.6	6.0	1.50	1.50	18	30	10	1	3
MDC2469	2-18	2.00	0.6	6.0	1.60	1.50	14	30	10	1	6

Outline	A	B	C	D	E	F	G
1	1.28	2.75	0.50	0.64	2.06	0.69	0.34
2	1.78	2.75	0.50	0.89	2.06	0.69	0.34
3	2.00	2.00	0.38	1.00	1.70	0.50	0.25
4	2.20	2.65	0.50	1.10	2.45	0.65	0.35
5	2.50	2.75	0.38	1.25	2.50	0.69	0.34
6	2.85	2.00	0.38	.95/1.9	1.70	0.50	0.25
7	3.40	3.60	0.50	1.70	3.40	1.00	0.30
8	3.70	4.00	0.50	1.85	3.70	1.10	0.35