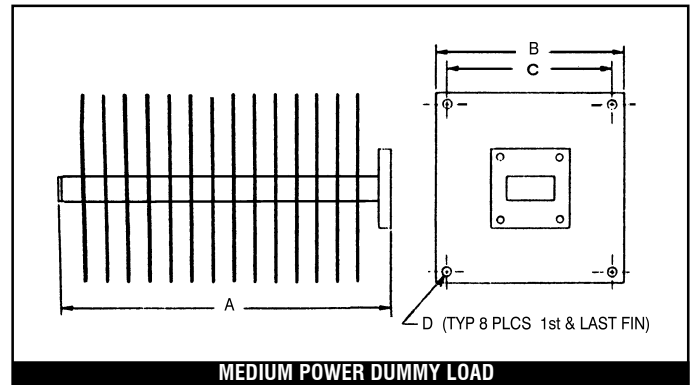
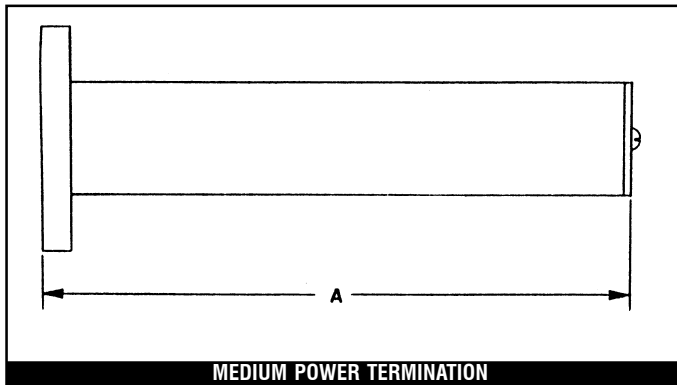


Medium Power Waveguide Termination and Dummy Load Outline Drawings

New Products

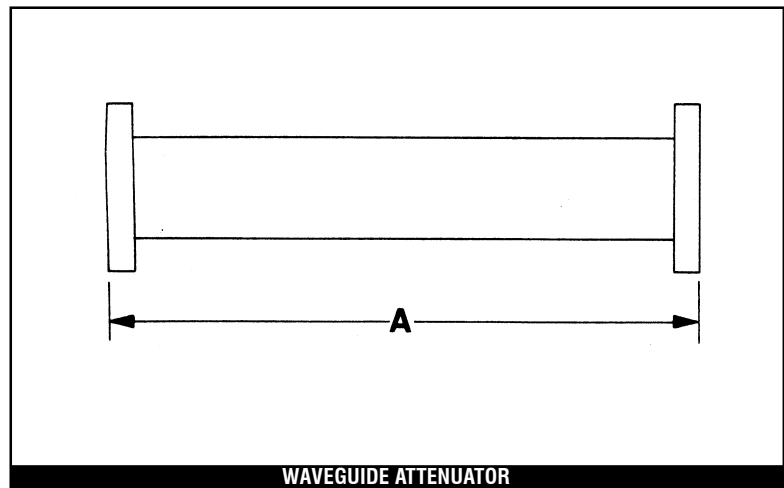


Attenuator Features

- 3, 6, 10, 20 dB Standard Values
- Full Waveguide Bandwidth
- Calibrated @ Center Frequency (+/- 0.2 dB Accuracy)
- 2.6 – 40 GHz Coverage
- VSWR: 1.15 max., all cases

MIDISCO's W/G attenuator repertoire includes fixed units operating to 40 GHz. Standard values are 3, 6, 10, and 20 dB. Other values are available. Standard exterior finish is flat black polyurethane paint.

Model No.	Frequency	W/G	Pwr	A
A-XY-284-M-DB	2.6-3.95	WR284	10 W	10
A-XY-229-M-DB	3.3-4.9	WR229	8 W	9
A-XY-187-M-DB	3.95-5.85	WR187	5 W	8.5
A-XY-159-M-DB	4.9-7.05	WR159	5 W	8
A-XY-137-M-DB	5.85-8.2	WR137	4 W	8
A-XY-112-M-DB	7.05-10.0	WR112	1 W	4.5
A-XY-102-M-DB	7.0-11.0	WR102	1 W	4
A-XY-90-M-DB	8.2-12.4	WR90	1 W	3.5
A-XY-75-M-DB	10.0-15.0	WR75	1 W	3.5
A-XY-62-M-DB	12.4-18.0	WR62	1 W	3
A-XY-51-M-DB	15.0-22.0	WR51	1 W	2.5
A-XY-42-M-DB	18.0-26.5	WR42	1 W	2.5
A-XY-34-M-DB	22.0-33.0	WR34	1 W	2
A-XY-28-M-DB	26.5-40.0	WR28	1 W	2



Part Number Construction: Part numbers for attenuators are constructed by inserting the codes for flange type and material as shown on the previous page for terminations (with the addition of "Y" for the second flange), and an added suffix for the dB value desired. For example, a WR90 brass 10 dB attenuator with one cover flange and one choke flange is part number **A-12-90-B-10**.

Other Midisco Waveguide Products

Please contact **MIDISCO** for all of your waveguide component requirements. In addition to the terminations and attenuators summarized here - and the products mentioned in the introduction to this section - we can supply many other rectangular and double ridge waveguide components. These include but are not limited to flanges, gaskets for pressure and EMI sealing, twists with flanges, end launch W/G to coaxial adapters, pressure windows, hybrid tees, and more.